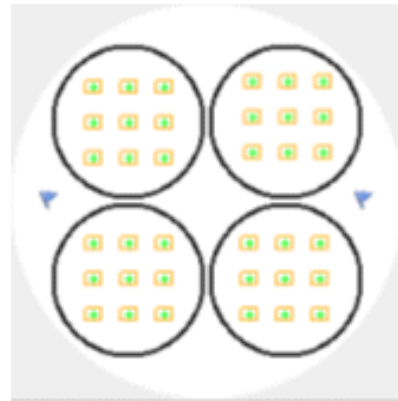
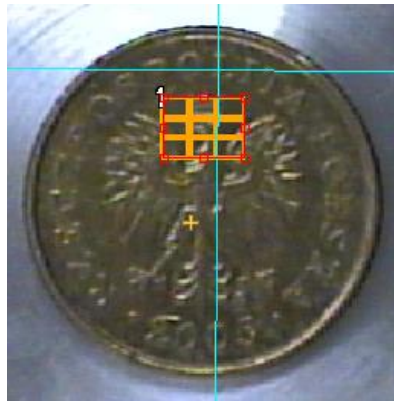


SEM Supporter Software PN-SEM-005

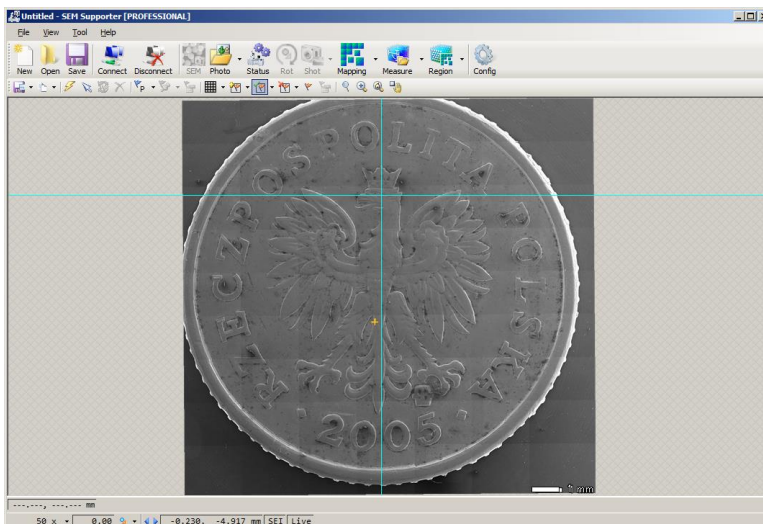
EM Supporter software automates SEM image collection, creation of a photo montage and image analysis*. Initial navigation and set up can be accomplished from any image (optical microscope, digital camera, SEM image) enabling correlative microscopy. Recipes can be created for moving to specific locations on a multiple sample set for collection of individual images or creating a grid for photo montage collection.



Within the automatic acquisition routine, the user can set up SEM control functions such as:

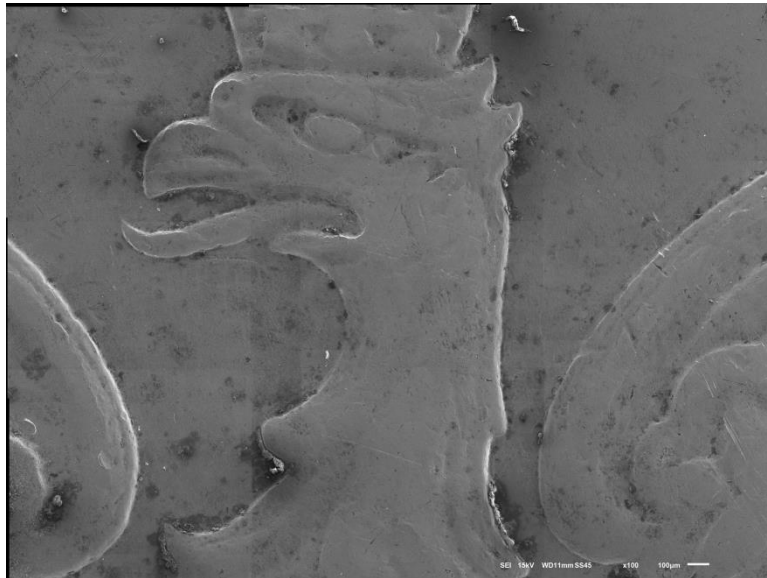
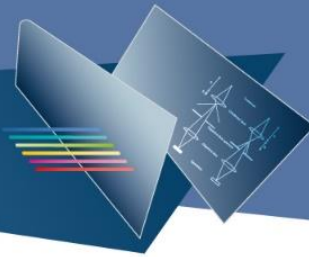
- Auto Focus, Auto Stigmation, Auto Brightness/Contrast
- Scan Speed
- Signal Type (including the ability for collection of multiple signals – SE and BSE)
- Z-focal map (ideal for flat samples)
- Beam Off (allowing for overnight unattended acquisitions)
- Navigation to specific sample locations from image data

Once a montage is created, the composite image can be used to navigate to specific locations across a sample.

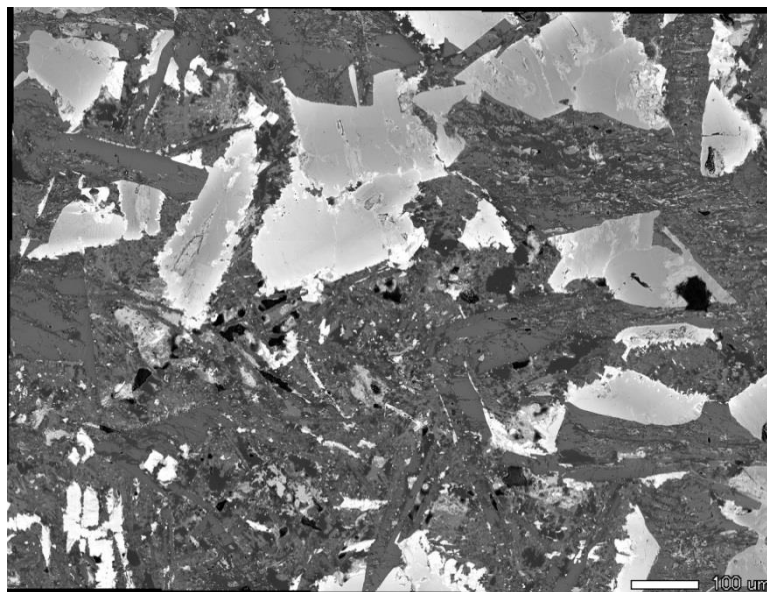


Cross hairs on the image show the current stage position. Double click on the composite image to drive to any location.

Each individual image as well as the composite image can be exported. Image formats include: BMP, TIFF, JPEG and PNG.



Coin: Montage (3x3 array) SE Image



Geological Thin Section: Montage (5x5 array) BSE Image

Analysis Functions – Options include:

Image Excite – Line Width Measurement

Region Advisor – Particle Size, Grain Analyzer

Recommended Hardware Specifications:

- Windows –XP, Vista, 7 and above. or better
- Memory: 2GB
- HD: 250GB